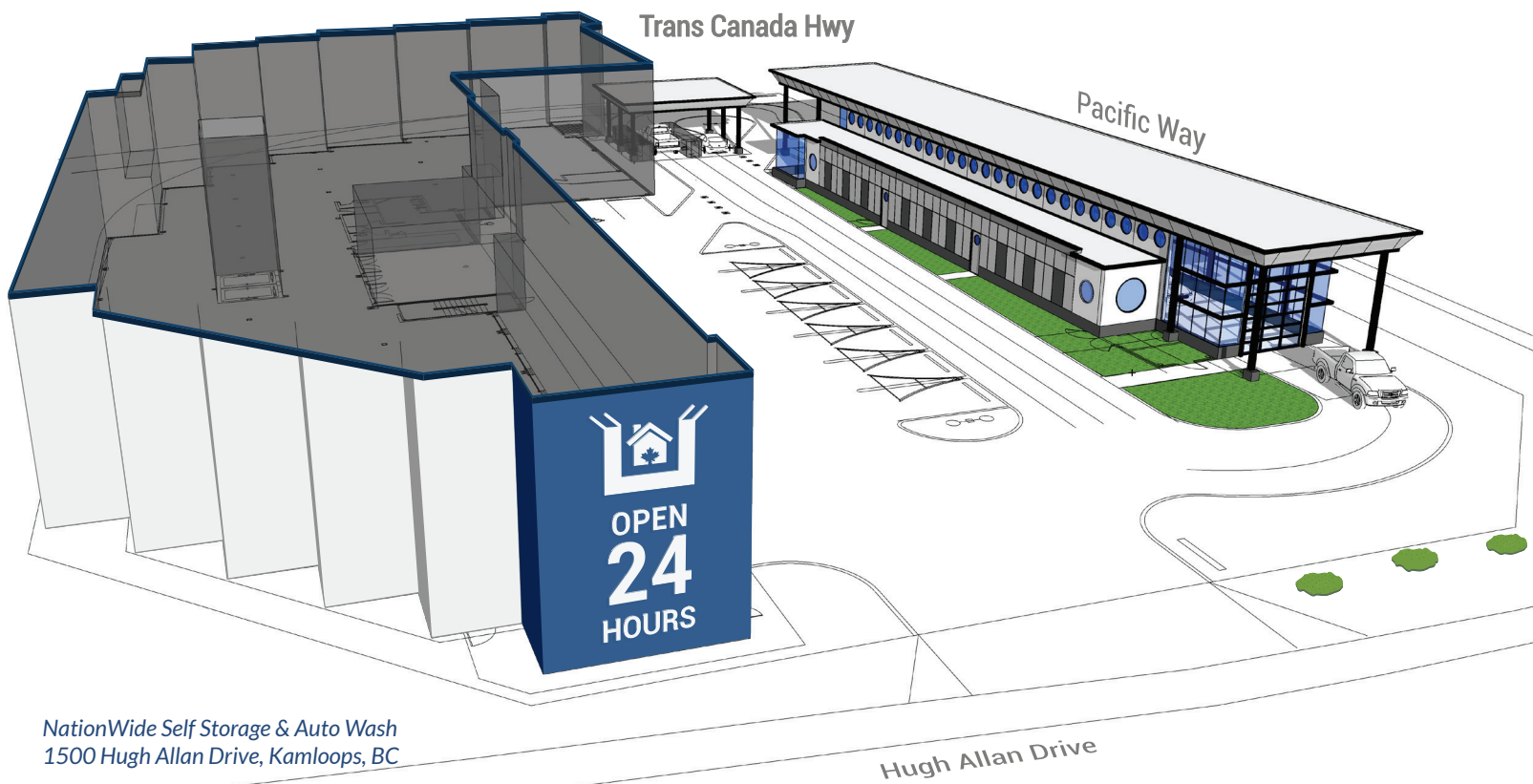


SHOVELS IN THE GROUND!

LATEST NEWS

- + City of Kamloops has issued our build permit for our combination self storage and auto wash facility at 1500 Hugh Allan Drive.
- + A fixed price construction contract has been awarded.
- + The land is cleared, and construction has commenced!



NationWide Self Storage & Auto Wash
1500 Hugh Allan Drive, Kamloops, BC

Hugh Allan Drive



NationWide
SELF STORAGE & AUTO WASH

KAMLOOPS PROPERTY
INVESTOR UPDATE NO. 2 / 2019

NATIONWIDE SELF STORAGE & AUTO WASH TRUST
808 - 609 Granville St., Vancouver, BC V7Y 1G5



KAMLOOPS PROPERTY

Total Floor Space: 58,529 sq.ft.¹

Building Height: 27 ft. or 2 floors¹
(excluding basement)

Security Features: + *keyless and fob access*
+ *CCTV 360° surveillance*
+ *fully fenced*
+ *well lit*
+ *individually alarmed lockers*

Completion Date: Q4 2019 (est)

¹ approximately

CONSTRUCTION CONTRACTOR



www.maple.ca

Building Permit Now Issued!

Nationwide is pleased to announce that the City of Kamloops ("CoK") has now granted us building and development permits for both our self storage facility and auto wash terminal to be built on our property at 1500 Hugh Allan Drive, Kamloops, BC (the "Kamloops Property").

Further to receiving our permits, we are pleased to report that we have now completed the assembly of our team comprised of an exceptional team of industry leaders in project management ("BTY Group"), self storage architectural, design and engineering ("CTA Design Group") and self storage construction ("Maple Reinders"). Collectively this group has designed and/or constructed of over 30 modern self storage facilities.

Contract Awarded!

Throughout a competitive bidding process managed by BTY Group, we have awarded a fixed price construction contract to Maple Reinders Construction. Maple Reinders is commencing construction and estimates that the building will be completed in Q4 2019.

With over 50 years of experience, Maple Reinders has been ranked as one of the Top 20 Contractors in Canada and as one of Canada's Best Managed Companies.

As one of Canada's trusted construction and engineering organizations, Maple Reinders encompasses all construction methodologies, materials and facilities, including:

- + Buildings (industrial, commercial, institutional) and renovations (tenant fit-ups, expansions, repair and restorations)
- + Leading-Edge water and wastewater technologies including treatment and infrastructure.
- + Environmental projects including creative solutions in waste management, green building and organic waste composting
- + Lead roles in responding to increased demand for integrated DBOF (Design/Build/Operate/Finance) solutions

SELECTIVE LIST OF AWARDS WON BY MAPLE REINDERS

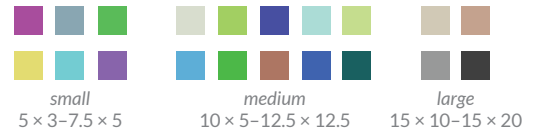


| | | |
|------|---|------------------------------------|
| 2018 | Canada's Best Managed Company | Platinum Member |
| 2016 | Canadian Design Build Institute Award of Excellence | Grand Winner |
| | Association of Professional Engineers and Geoscientists of BC | Environmental Award |
| | Federation of Canadian Municipalities | Sustainable Communities Award |
| 2015 | Canada's Best Managed Company | Gold Standard |
| | Canadian Construction Association | Environmental Achievement Award |
| | Mayor's Urban Design Award, Calgary | Urban Fragments Honourable Mention |

View Maple Reinders extensive list of awards at www.maple.ca/awards

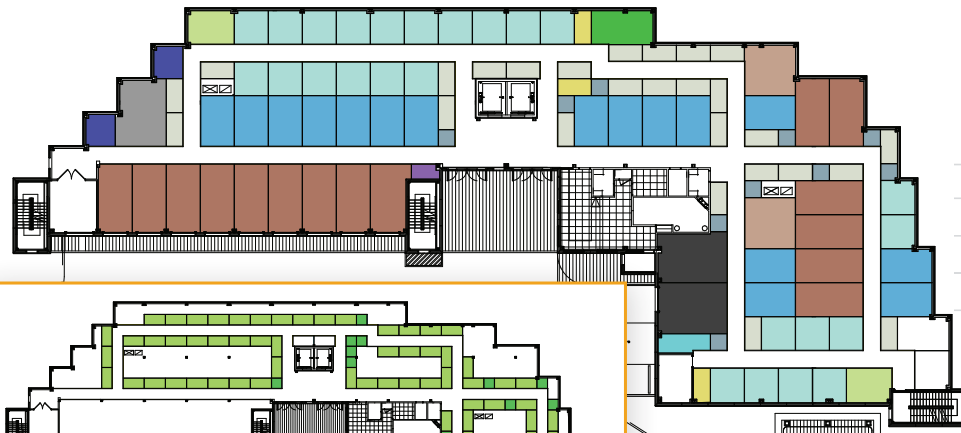
Locker Floor Plans

LOCKER SIZE INDEX



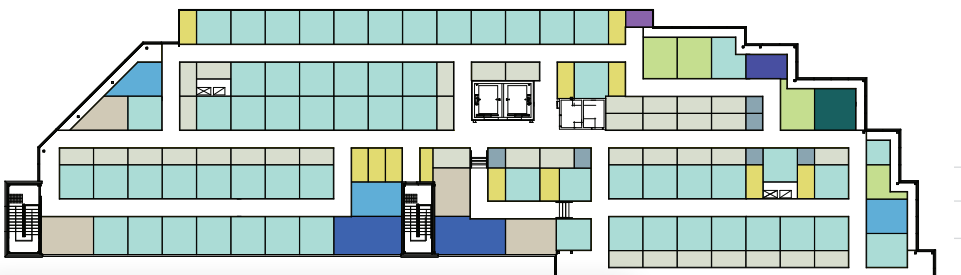
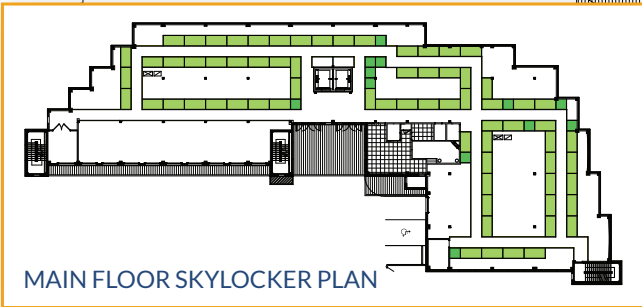
BASEMENT LEVEL

| | |
|--------------|--------------------------------|
| Floor Space | 18,860 sq. ft. ¹ |
| Locker Units | 138 storage units ¹ |
| Features | elevators, washrooms |



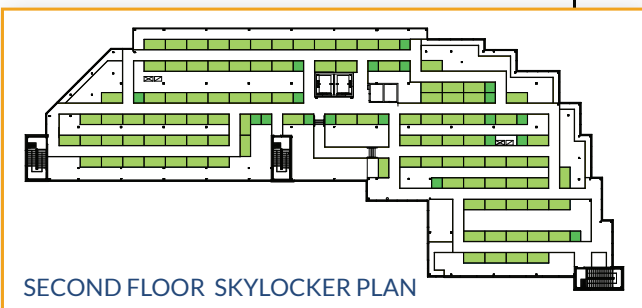
MAIN FLOOR

| | |
|----------------|---|
| Floor Space | 18,924 sq. ft. ¹ |
| Locker Units | 100 storage units ¹ |
| Drive-up Units | 9 storage units ¹ |
| Sky Lockers | 82 storage units ¹ |
| Features | Loading bays, elevators, bike lockers, reception, customer lounge, washrooms, employee lounge |



SECOND FLOOR

| | |
|--------------|--------------------------------|
| Floor Space | 20,745 sq. ft. ¹ |
| Locker Units | 156 storage units ¹ |
| Sky Lockers | 123 storage units ¹ |
| Features | elevators, washrooms |



¹ approximately



Auto Wash Development

The Kamloops Property is zoned C-4 (Service Commercial) which is appropriate for the approximate 6,030 sq. ft. Express Auto Wash that will be developed on the property in addition to the self storage facility.

The dynamic state-of-the-art 160 ft. auto wash tunnel will provide customers with the complete car wash solution in approximately 3 minutes, and also include drive-up self-serve vacuum stations.

AUTO WASH DETAILS

Total Floor Space: 6,030 sq.ft.¹

Tunnel System: 160-EDT

Est. Car Washes: 400 per day¹

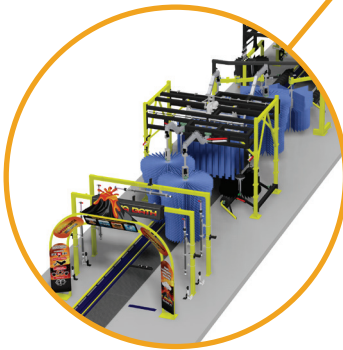
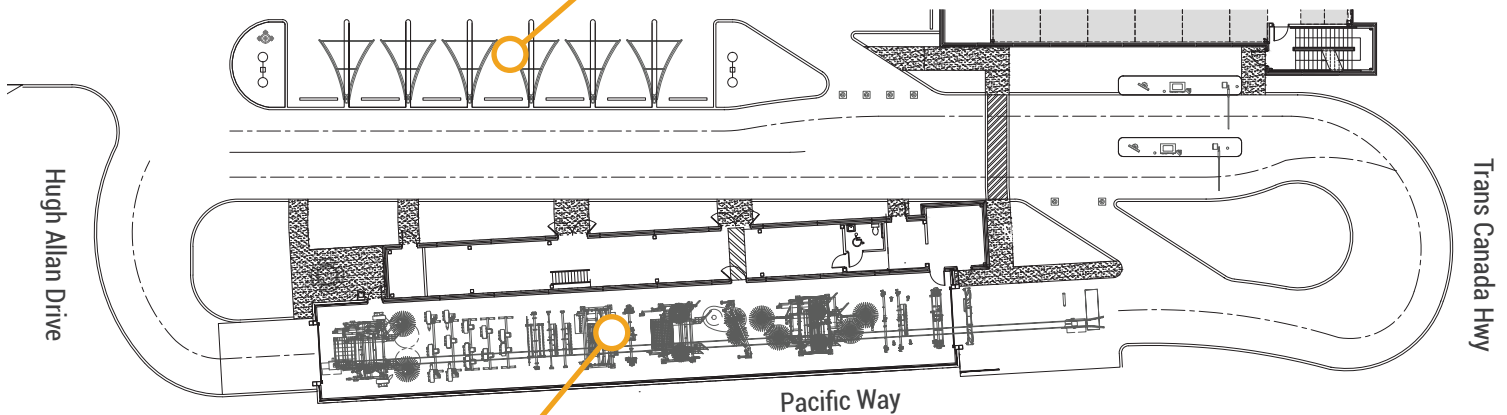
Est. Vacuum Booms 10 boom stations

¹ approximately



Professional-Grade Self-Serve Vacuum Stations

Vacuum tokens will cost \$3 each and will provide 4 minutes of vacuum time.



160-EDT Fusion™ Powered Auto Wash Tunnel

Customers can save time and water with a 3 minute eco-friendly car wash.



Don't Miss
an Update!

Visit NationWideselfStorage.ca
to subscribe to our mailing lists.

This information is general in nature and does not constitute an offer to sell or an advertisement, solicitation, or recommendation to buy securities. Nothing on these pages constitutes investment, legal or tax advice, nor was it prepared in consideration of the investment objectives, financial situation, particular needs of any specific recipient. There can be no assurance that investments will perform as or be of the quality anticipated. There are risks associated with any investment.